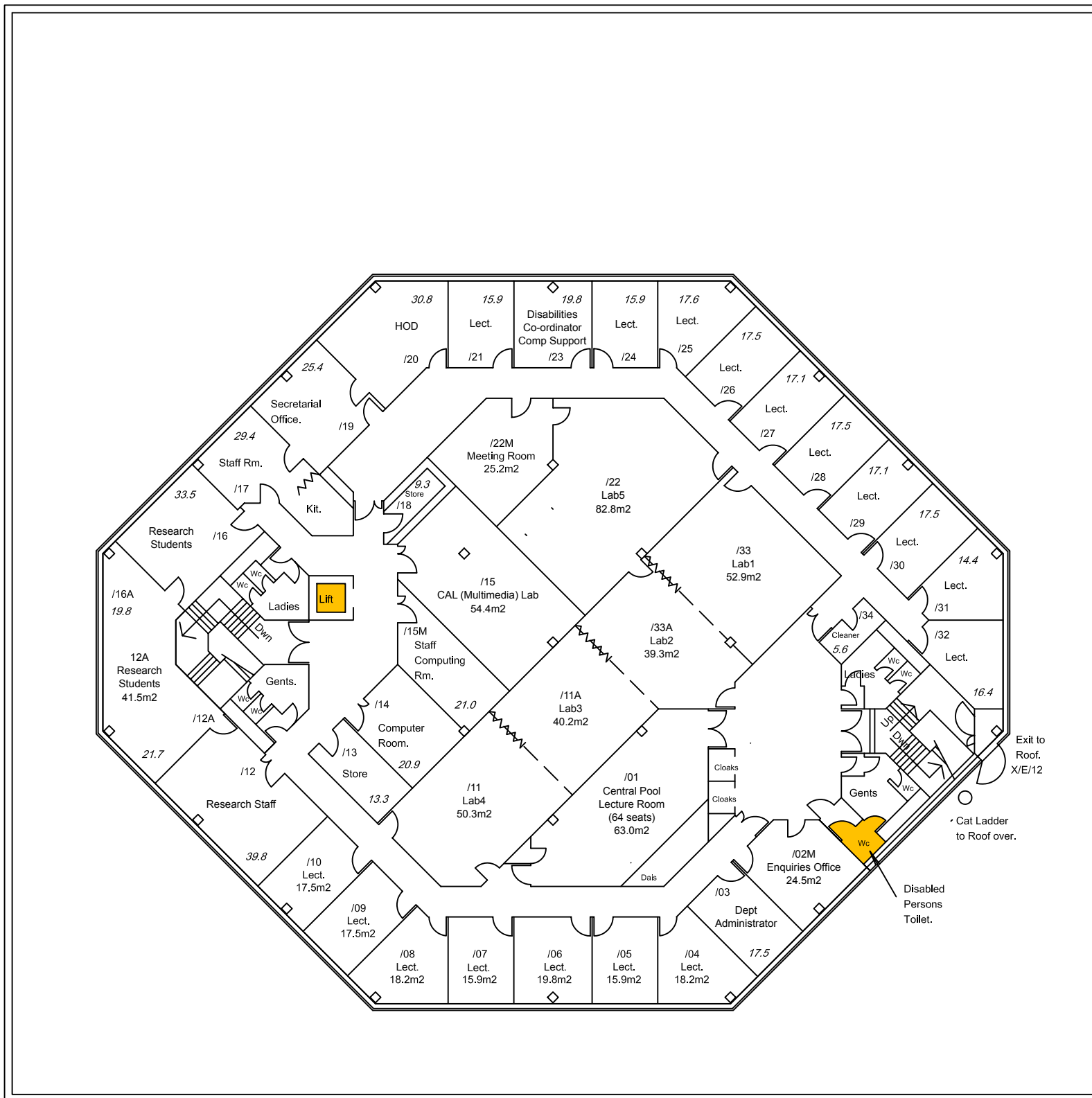
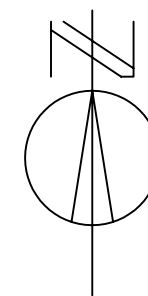


Dimensions are not to be scaled from this drawing.
 This drawing is copyright and is not to be copied in part or whole without the permission of the Estates Director
 © Loughborough University
 Estates Services



LEVEL 4.

Level 4
 Room Numbers X/4/..
 Summary of Areas on Level 4:
 Central Pool (ZZ) = 63.0m²
 Estates (PM) = 5.6m²
 Library & Information Studies (LS) = 961.7m²
 Total usable = 1030.3m²
 Total Gross = 1384.1m²

SUMMARY OF AREAS ON SHEETS 26A, 26B, 26C AND 26D	
CENTRAL POOL	63.0 Sq.m.
ESTATES	24.2 Sq.m.
LIBRARY AND INFORMATION STUDIES	1082.0 Sq.m.
LIBRARY	6653.4 Sq.m.
TOTAL USABLE	7822.6 Sq.m.

Building Prefix - X



ESTATES SERVICES
 LOUGHBOROUGH LEICS TEL 263171

PROJECT
 Pilkington Library
 Level 4
 Floor Plan

DRAWING
 Estates Record Drawing

SCALE	DATE	DRAWN
1/200	10/10/01	CM

CAD Ref:
 UFS-Y:Dev.. Unit/Jobs/Records

XRef:

DRAWING No.	REV	DWG. SIZE
26D		A2